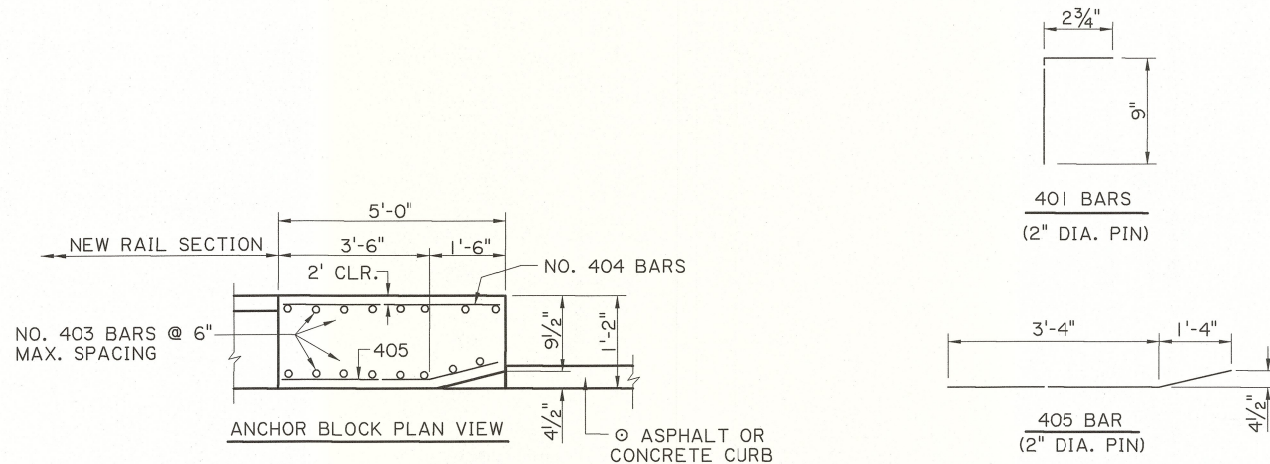
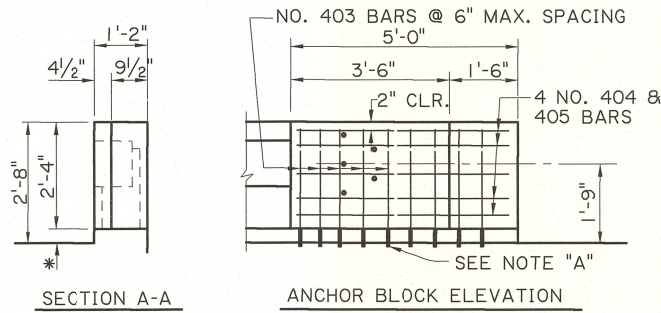


* 4" EXISTING RAILING PARAPET



GENERAL NOTES

FOR ADDITIONAL INFORMATION ON GUARD RAIL, SEE STANDARD PLANS FOR HIGHWAY GUARD RAIL (MASH).
ALL DIMENSIONS SHALL BE VERIFIED IN THE FIELD BY THE CONTRACTOR AND APPROVED BY THE PROJECT ENGINEER.

FOR CURB & TRANSITION INFORMATION, SEE STANDARD PLANS FOR HIGHWAY GUARD RAIL (MASH), SHEET 3 OF 11.

GUARD RAIL ANCHOR BLOCKS

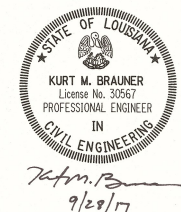
ALL WORK AND MATERIALS REQUIRED TO REMOVE EXISTING RAILING AND CONSTRUCT THE ANCHOR BLOCK SHALL BE PAID FOR UNDER: GUARD RAIL ANCHOR BLOCK, PER EACH, ITEM 704-09-00100

CONCRETE IN CROSS HATCHED AREA SHALL BE REMOVED. THE EXISTING REINFORCING STEEL SHALL REMAIN IN PLACE AND SHALL BE CLEANED AND STRAIGHTENED TO THE SATISFACTION OF THE PROJECT ENGINEER BEFORE POURING NEW CONCRETE. THE REINFORCING STEEL IN THE 1'-6" X 4 1/2" SLOT MAY BE CUT OR BENT TO ACCOMMODATE THIS SLOT.

NOTE "A"

NO. 401 & 403 BARS SET IN 3/4" Ø DRILLED HOLES. CLEAN HOLES WITH COMPRESSED AIR AND MAKE THEM FREE OF ANY OIL OR RESIDUE. FILL HOLES WITH A TYPE V, GRADE 2 OR 3 EPOXY LISTED ON APPROVED MATERIALS LIST, PRODUCT CATEGORY "EPOXY RESIN SYSTEMS FOR CONCRETE." PLACE BARS IN HOLES AND WAIT THE MANUFACTURERS CURE TIME BEFORE POURING NEW CONCRETE.

FOR INFORMATIONAL PURPOSES ONLY



| SHEET NUMBER | | PARISH | | CONTROL SECTION | | STATE PROJECT | |
|---|------------|---------|------------|--------------------------------------|------------|---------------|-----|
| DESIGNED | P. FOSSIER | CHECKED | C. GAUDRY | REVIEWED | K. BRAUNER | DATE | NO. |
| DRAWN | J. DOUCET | CHECKED | P. FOSSIER | REVISION OR CHANGE ORDER DESCRIPTION | BY | DATE | NO. |
| <p style="text-align: center;">GUARD RAIL ANCHOR BLOCK REHABILITATION FOR CONCRETE POST & RAIL (ALTERNATE 1) FOR USE WITH HIGHWAY GUARD RAIL (MASH)</p> <p style="text-align: center;">BD.2.6.5.2.04</p> | | | | | | | |
| | | | | | | | |
| <p>BRIDGE AND STRUCTURAL DESIGN</p> | | | | | | | |